



RACING BRAKE PADS  
FOR CERAMIC  
COMPOSITE  
DISCS

PERFORMANCE AND RACE COMPOUNDS  
SPECIFICALLY ENGINEERED FOR  
CERAMIC DISC APPLICATIONS

SLIGHTLY PROGRESSIVE IN-STOP  
FRICTION BEHAVIOR



VERY GOOD MODULATION  
AND CONTROLLABILITY

WIDE OPERATING  
TEMPERATURE RANGE

LOW HEAT CONDUCTIVITY

EXCELLENT RELEASE CHARACTERISTICS

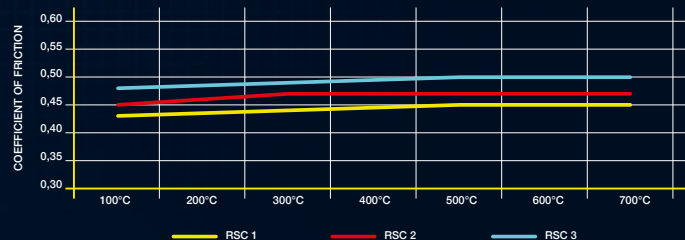
#### AVAILABLE RSC RACING BRAKE PAD COMPOUNDS

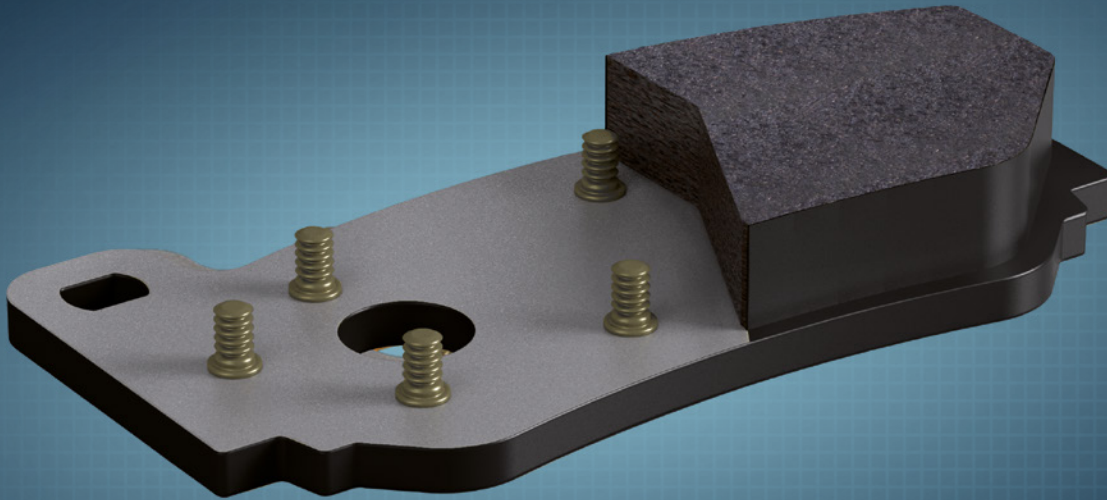
RSC 1	RSC 2	RSC 3
-------	-------	-------

Amazing track day and club sport material for a wide application range of performance cars.

PAGID Racing RSC compounds are developed to comply with the latest requirements in ceramic composite brake disc technology and meet or surpass all current ecological standards in the automotive industry.

#### FRICTION vs. TEMPERATURE RSC





### **PAGID RACING STEEL BACKING PLATE DESIGN**

PAGID Racing employs dual retention systems, with an adhesive bond and a patented mechanical system. The mechanical system consists of brass studs that are welded directly to the backplate to ensure a positive retention between pad compound and the backplate. These brass studs are softer than the brake disc (rotor) and wear away as the pad is consumed causing no damage to the disc.

**+ UNIQUE AND PATENTED SYSTEM**

**+ FRICTION MATERIAL IS FIXED TO THE BACKPLATE**

**+ NO DELAMINATION FROM THE STEEL BACKING PLATE**

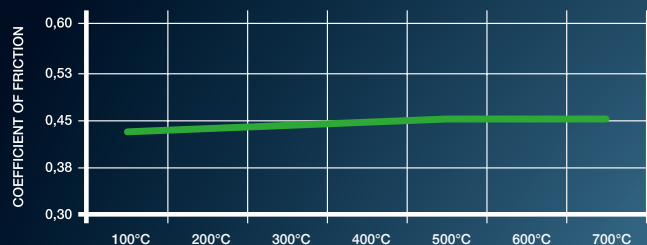
**+ HIGH TECH AND INNOVATION FOR YOUR VEHICLE**



- + MEDIUM FRICTION COEFFICIENT
- + GOOD ALLROUND PERFORMANCE CHARACTERISTICS
- + DISC FRIENDLY



FRICION vs. TEMPERATURE RSC 1



#### APPLICATION RANGE

Race and track day compound for all known types of ceramic brake discs.

#### DESCRIPTION

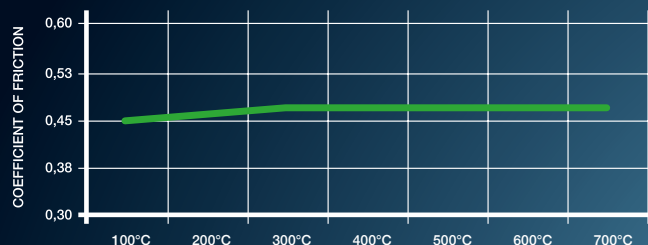
RSC 1 is a low metallic resin bonded material containing steel and aramid fibers. This material features good all-round characteristics and is suitable for all types of usage.



- + MEDIUM HIGH FRICTION COEFFICIENT
- + EXCELLENT FADE RESISTANCE
- + LONG PAD LIFE



**FRICION vs. TEMPERATURE RSC 2**



### APPLICATION RANGE

Special race compound for ceramic discs with a high content of fibers in the friction surface for sprint and endurance circuit racing.

### DESCRIPTION

RSC 2 is a low metallic resin bonded material containing steel and aramid fibers. This material is specifically developed for above mentioned applications.

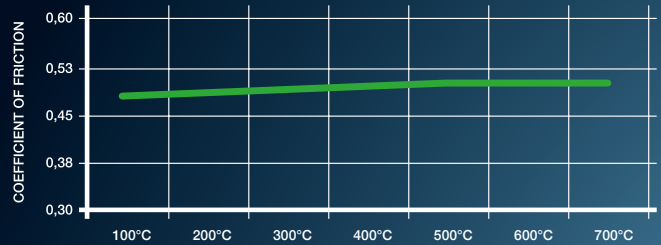




- + HIGH FRICTION COEFFICIENT
- + EXCELLENT FADE RESISTANCE
- + LONG PAD LIFE



**FRICION vs. TEMPERATURE RSC 3**



### APPLICATION RANGE

Special race compound for ceramic discs with low content of fibers in the friction surface for sprint and endurance circuit racing.

### DESCRIPTION

RSC 3 is a low metallic resin bonded material containing steel fibers. This material is specifically developed for above mentioned applications.

# RSC RACING BRAKE PADS AVAILABLE FOR:

Alfa Romeo

Audi

Bentley

BMW

Chevrolet

Dodge

Ferrari

Ford

Lamborghini

McLaren

Mercedes

Nissan

Porsche

VW

## FIND YOUR PAGID RACING BRAKE PRODUCTS

All the detailed information about PAGID Racing brake products can be found at [www.pagidracing.com](http://www.pagidracing.com) in the **SEARCH** section.



# MAXIMUM PERFORMANCE FOR EVERY PURPOSE



PAGID Racing brake products have been optimised for your individual requirements and provide the perfect solution for every purpose:

Endurance • Sprint • Formula  
Track Days • Club Sport • Allround  
Rally • Stock Car • Historic Cars

All over the world, numerous motorsport teams in the most varied racing categories successfully rely on PAGID Racing's quality and reliability.

The available specifications and possible applications can be found in our detailed **product search** at [www.pagidracin.com](http://www.pagidracin.com).

Your PAGID Racing Dealer

## EUROPE

TMD Performance GmbH  
Lüschershofstr. 80  
D-45356 Essen  
Germany

## USA

TMD Performance, SMLLC  
1035 Crooks Road  
Troy, MI 48084  
USA

[www.pagidracin.com](http://www.pagidracin.com)