

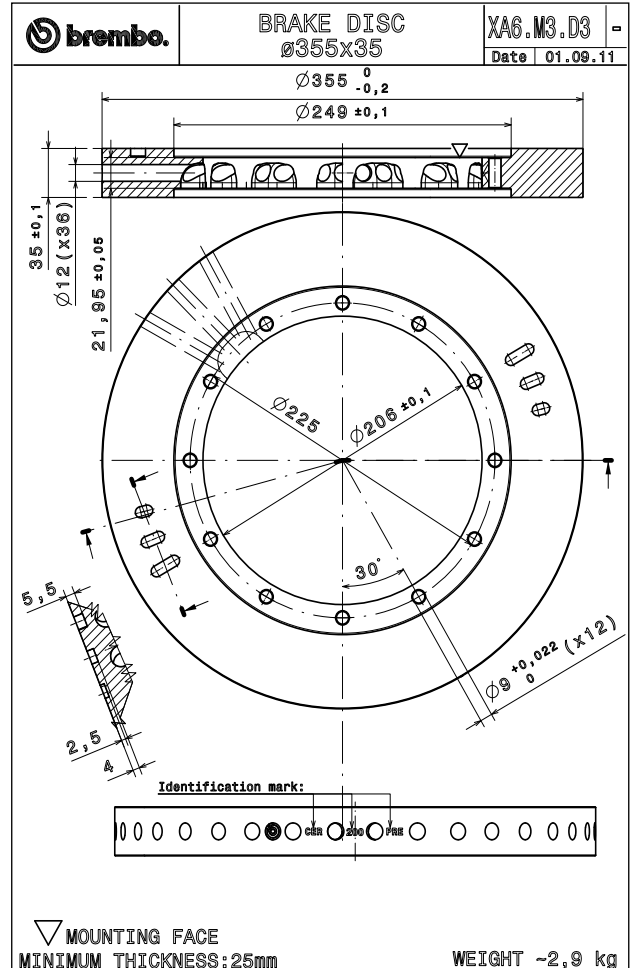
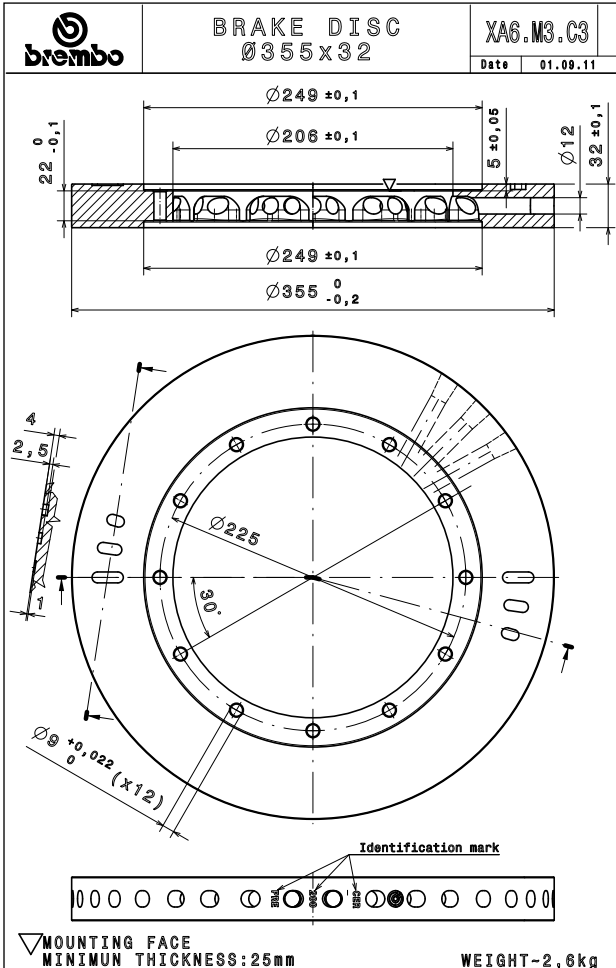
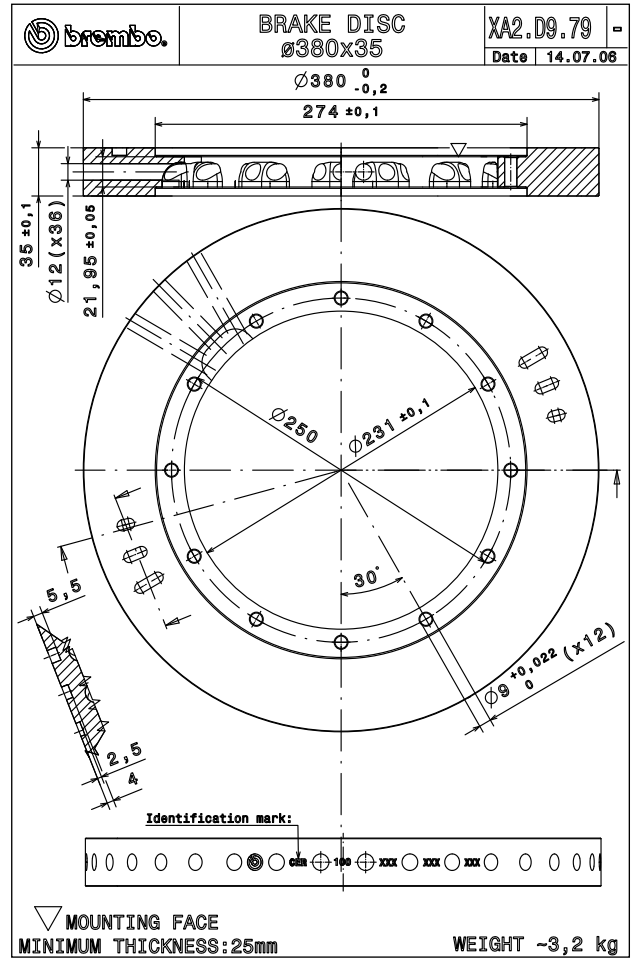
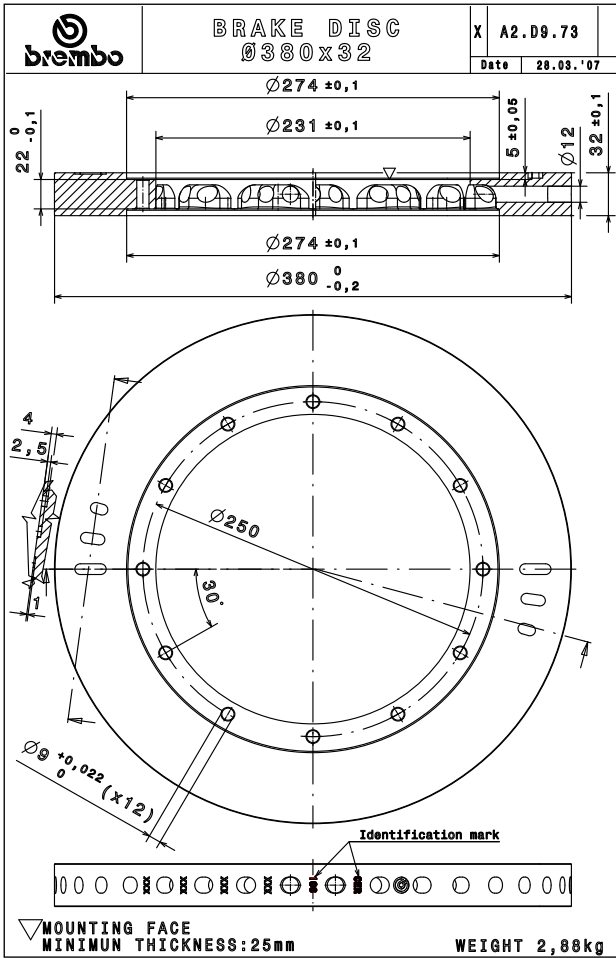
Fixing number	PCD (mm)	Inside diameter (mm)	Flange inside diameter (mm)	Flange Th (mm)	Related pads	
12	225	249	206	22	07.9076.20	07.9076.30
12	250	274	231	22	07.9076.20	07.9076.30
12	225	249	206	22	07.9076.10	07.9076.50
12	225	249	206	22	07.9076.20	
12	250	274	231	22	07.9076.10	07.9076.50
12	250	274	231	22	07.9076.20	
12	225	249	206	22	07.9076.10	07.9076.50
12	225	249	206	22	07.9076.20	
12	250	274	231	22	07.9076.10	07.9076.50
12	250	274	231	22	07.9076.20	

+ + + +
 + + + +
 + + + +
 + + + +

2



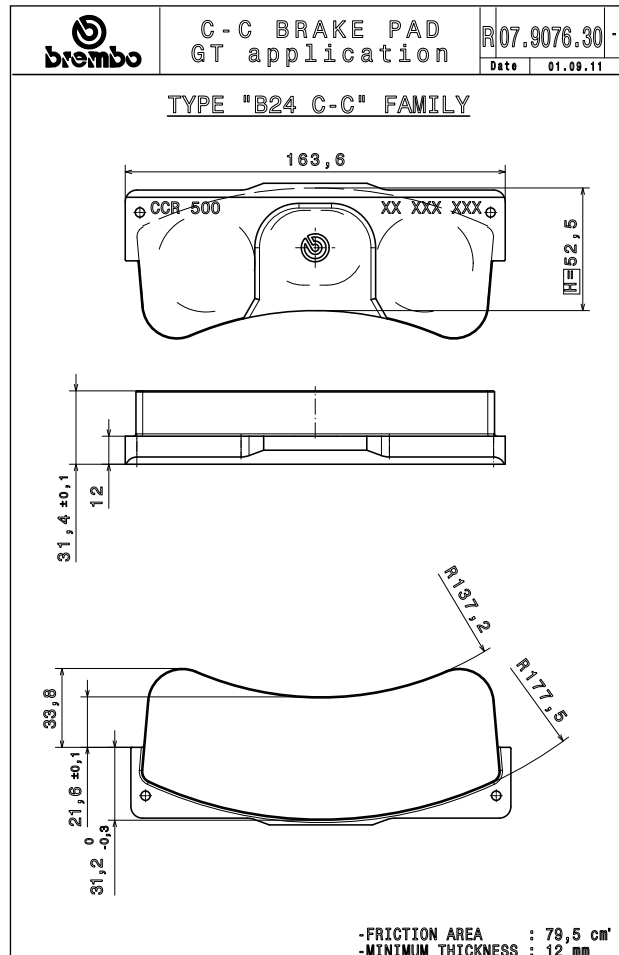
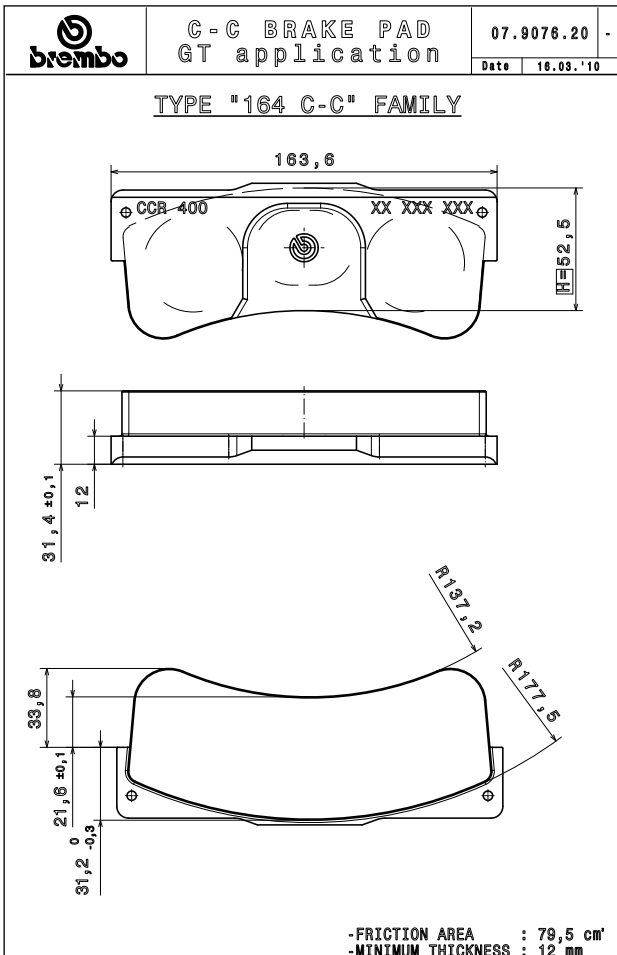
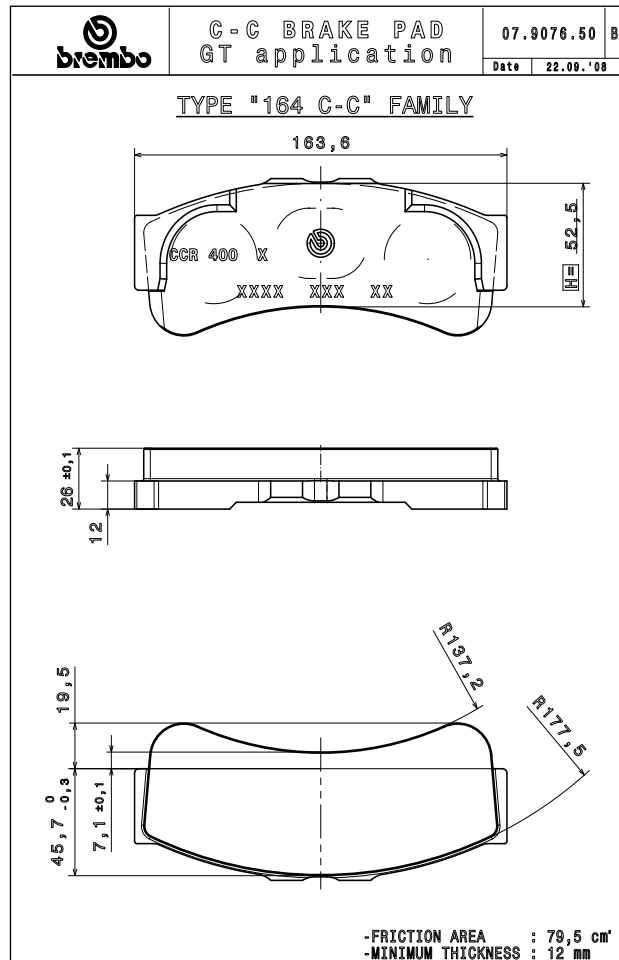
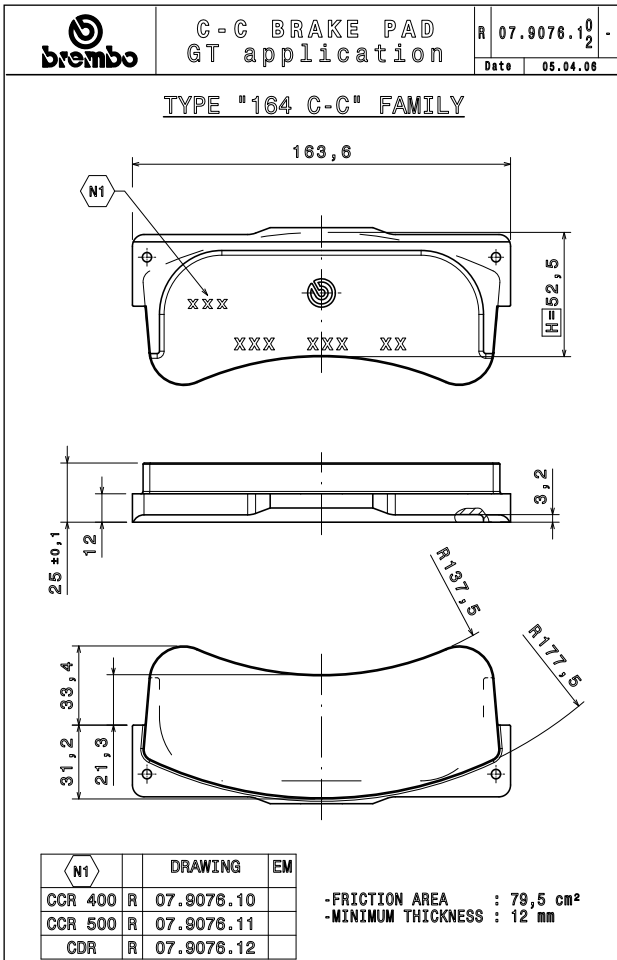
+ + + +
 + + + +
 + + + +
 + + + +



++++
++++
++++
++++

2

++++
++++
++++
++++



++++
++++
++++
++++

2

++++
++++
++++
++++

Disc Assemblies



3



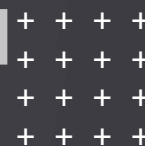
CAR	FRONT (left/right)	REAR (left/right)	DESCRIPTION
Ferrari 430 GT2/GT3	XA2.87.31/32		380x35mm (72vanes)
	XA2.87.33/34		380x32mm (72vanes)
		XA2.87.41/42	332x32mm (48vanes)
F3 2008	XA6.S1.15/25		278x18mm (48vanes)
		XA6.S1.15/25	278x18mm (48vanes)
Mitsubishi Evo IX Gr.N	XA5.S5.31/32 (Tarmac)		355x32mm (72vanes)
	XA5.S5.51/52 (Gravel)		300x30mm (48vanes)
Mitsubishi Evo X Gr.N		XA5.S5.23/24	295x25,4mm (48vanes)
	XA7.G0.31/32 (Tarmac)		355x32mm (72vanes)
	XA7.G0.21/22 (Gravel)		300x32mm (48vanes)
Nissan GTR		XA7.G0.23/24	295x25,4mm (48vanes)
	XA9.N4.11/12		380x34mm (72vanes)
Peugeot S2000 Evo		XA9.N4.21/22	380x30mm (48vanes)
	XA9.Y6.10/20 (Gravel)		295x25,4mm (48vanes)
Porsche 996 RSR	XA9.Y6.30/40 (Tarmac)		355x32mm (48vanes)
		XA9.Y6.10/20	295x25,4mm (48vanes)
	XA0.74.71/72		380x35mm (72vanes)
Porsche 996 CUP	XA0.74.73/74		380x32mm (72vanes)
		XA0.74.81/82	355x32mm (48vanes)
Porsche 997 CUP	XA4.F2.11/12		350x34mm (72vanes)
		XA4.F2.21/22	330x28mm (48vanes)
Porsche 997 RSR	XA5.R7.11/12		380x34mm (72vanes)
		XA5.R7.21/22	350x28mm (72vanes)
Porsche 997 CUP/GRAND-AM	XA6.C9.11/12		380x32mm (72vanes)
	XA6.C9.13/14		380x35mm (72vanes)
		XA6.C9.21/22	355x32mm (72vanes)
Porsche 997 GT2 RSR 2010-2011		XA6.C9.21/22	355x32mm (72vanes)
	XA6.H7.21/22		380x32mm (72vanes)
		XA6.H7.31/32	355x32mm (72vanes)
Skoda S2000 Evo	XA6.C9.11/12		380x32mm (72vanes)
	XA6.C9.13/14		380x35mm (72vanes)
		XA6.C9.65/66	355x32mm (72vanes)
Skoda S2000 Evo	XA9.X4.10/20 (Gravel)		300x28mm (48vanes)
	XA9.X4.30/40 (Tarmac)		355x32mm (48vanes)
		XA9.X4.10/20	300x28mm (48vanes)



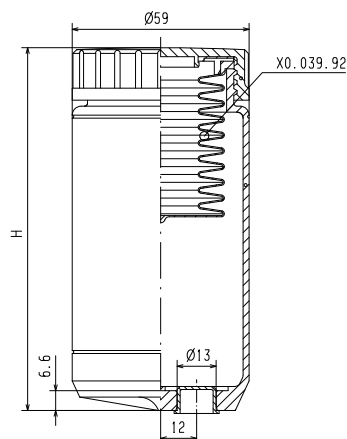
Master Cylinders & Reservoirs



4



++++
 ++++ **P/N 10.8687.10/13**
 ++++ **STANDARD RESERVOIRS**
 ++++



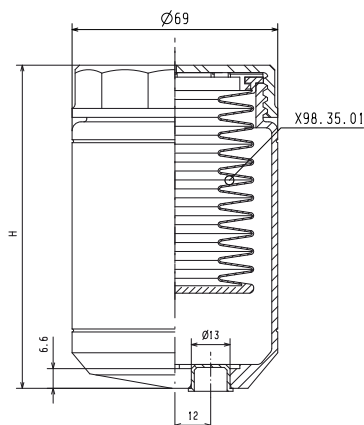
	Nipple kit	Alluminium	R 10.8687.22
	Nipple kit	Alluminium	R 10.8687.26

Part number	Volume (cm ³)	H
R 10.8687.10	83	75.5
R 10.8687.11	163	110.5
R 10.8687.12	180	120.5
R 10.8687.13	238	148.5

	Nipple		Nut		O-ring
			Washer		
			O-ring		

4

++++
 ++++ **P/N 10.8687.14/15**
 ++++ **GRAN TOURING RESERVOIRS**
 ++++



	Nipple kit	Alluminium	R 10.8687.22
	Nipple kit	Alluminium	R 10.8687.26

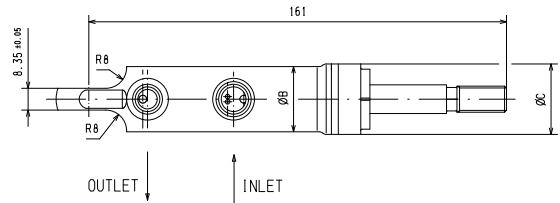
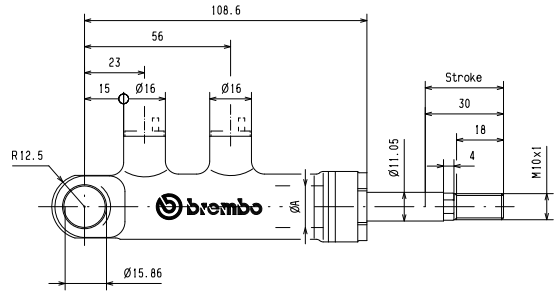
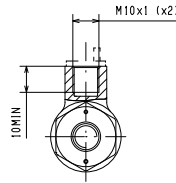
Part number	Volume (cm ³)	H
R 10.8687.14	199	108.4
R 10.8687.15	304	144.5

	Nipple		Nut		O-ring
			Washer		
			O-ring		

++++
 ++++
 ++++
 ++++

++++
 ++++
 ++++
 ++++

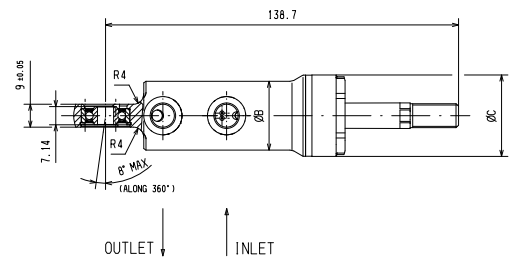
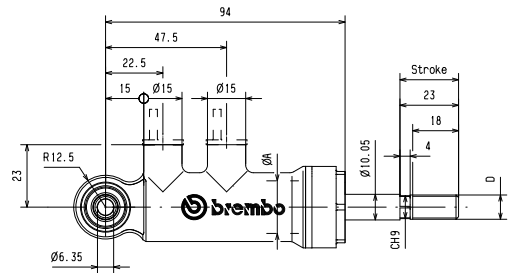
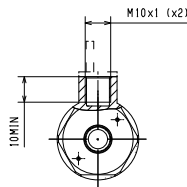
P/N X97.54.11/16 FRONT PIVOT FIXING MASTER CYLINDER



ØA	ØB	ØC		Part Number
15	25	27	X	97.54.11
16	25	27	X	97.54.12
17	25	30	X	97.54.13
18	25	30	X	97.54.14
19.05	25	30	X	97.54.15
20.64	26	30	X	97.54.16

4

P/N XA2.L2.A7/F7 – XA3.G1.32/45 FRONT PIVOT FIXING WITH VERTICAL BEARING MASTER CYLINDER

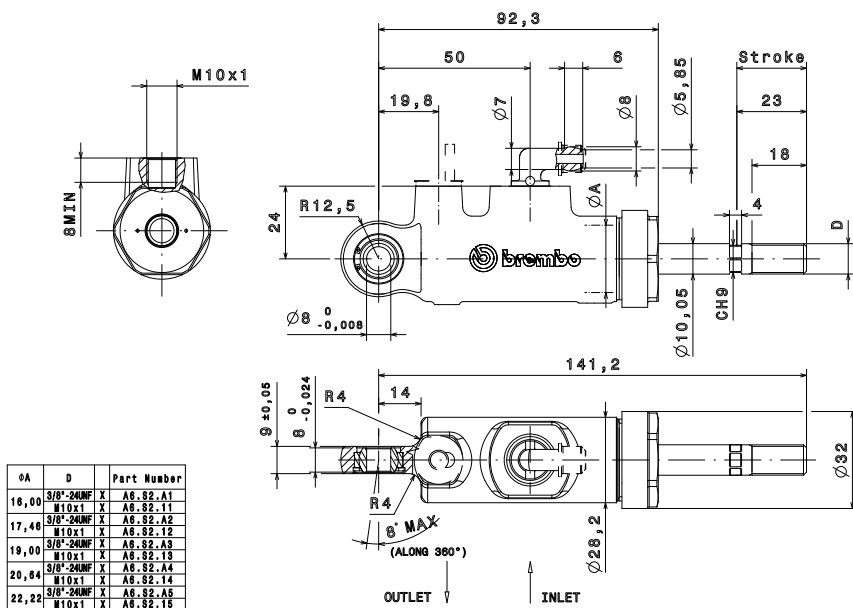


ØA	ØB	ØC	D	Part Number
16.00	25	30	3/8"-24UNF	X A3.G1.42
			M10x1	X A3.G1.32
17.46	25	30	3/8"-24UNF	X A3.G1.44
			M10x1	X A3.G1.34
19.00	25	30	3/8"-24UNF	X A3.G1.45
			M10x1	X A1.G1.35
20.64	27	32	3/8"-24UNF	X A2.L2.A7
			M10x1	X A2.L2.F6
22.22	27	32	3/8"-24UNF	X A2.L2.A8
			M10x1	X A2.L2.F7

++++
 ++++
 ++++
 ++++

++ ++
 ++ ++
 ++ ++
 ++ ++

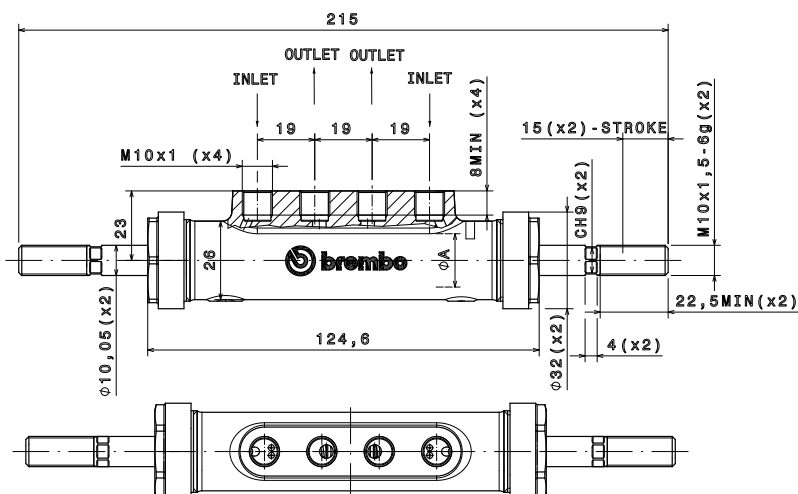
XA6.S2.11/15 - XA6.S2.A1/A5 FORGED MASTER CYLINDER



ØA	D	Part Number
16,00	3/8"-24UNF X	A6.S2.A1
	M10x1 X	A6.S2.11
17,46	3/8"-24UNF X	A6.S2.A2
	M10x1 X	A6.S2.12
19,00	3/8"-24UNF X	A6.S2.A3
	M10x1 X	A6.S2.13
20,64	3/8"-24UNF X	A6.S2.A4
	M10x1 X	A6.S2.14
22,22	3/8"-24UNF X	A6.S2.A5
	M10x1 X	A6.S2.15

4

P/N XA7.B9.11/13 TWIN MASTER CYLINDER FOR HANDBRAKE



ØA	Part Number
16,00	XA7.B9.11
17,00	XA7.B9.12
18,00	XA7.B9.13

++ ++
 ++ ++
 ++ ++
 ++ ++

